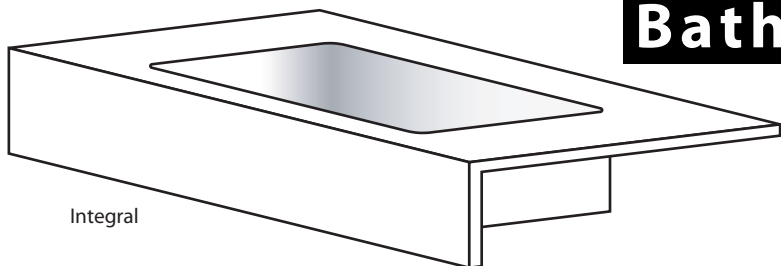


ARTIO

Bath Basin



Integral

The drain position in the back corner of Artio adds a little something unexpected for the user. At 7" deep, its also nice for the person that actually wants to close the drain and fill the sink.

DESIGN OPTIONS

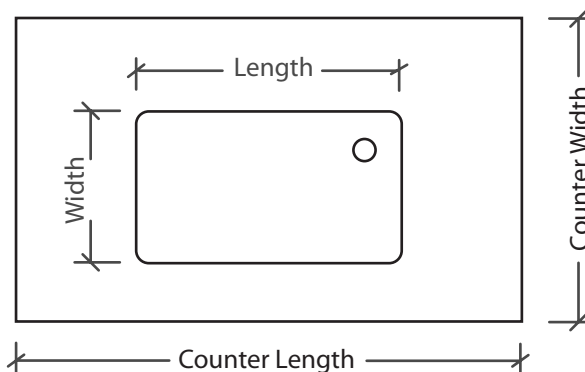
X	Apron Front
	Undermount (below counter)
X	Stand Alone / Floating
X	Integral - Standard Cabinet Install

BASIN SIZE OPTIONS

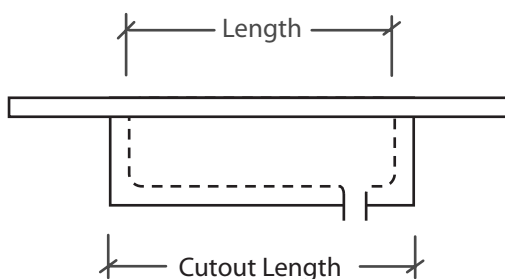
Dimensions are nominal within a tolerance of +/- 1/8"

Model	Length	Width	Depth	Drain	Counter Length	Counter Width	*Cutout Length	*Cutout Width
RECCD-S	21"	12"	7"	1.75"	26" Min	16" Min	24"	14"

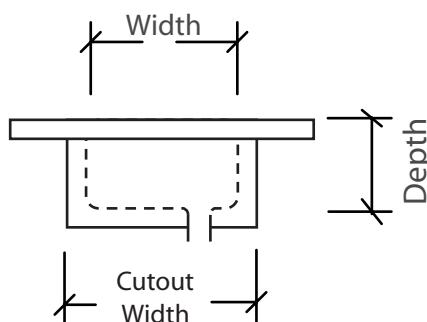
PLAN VIEW



FRONT VIEW



SIDE VIEW



*applicable to integral applications where sink falls below cabinet opening

DEX